

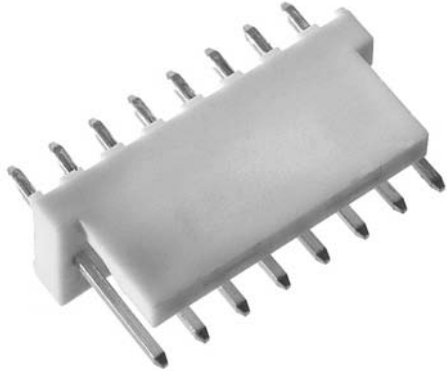
Mas-Con®

ITW Pancon

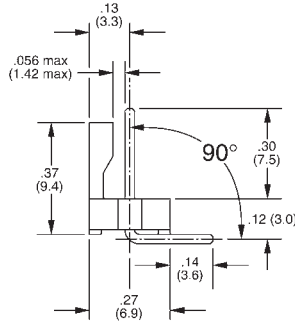
**Series MTSS/MTAS
Tab Polarized
Headers**

**.100" (2.54 mm) Headers
Available in 2-12,
14 Circuits**

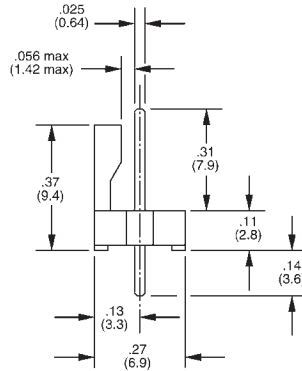
**RoHS
Compliant**



Dimensions



MTAS 100



MTSS 100

Dimensions

No. of Circuits	2	3	4	5	6	7	8	9	10	11	12	14
Dimensions in mm ^a	.200 (5.08)	.300 (7.62)	.400 (10.16)	.500 (12.70)	.600 (15.24)	.700 (17.78)	.800 (20.32)	.900 (22.86)	1.000 (25.40)	1.100 (27.94)	1.200 (30.48)	1.400 (35.56)

Part Number

No. of Circuits 2-12, 14 (Contact Factory For Other Circuit Availability)		<input type="checkbox"/> <input type="checkbox"/> = Number of Circuits	
Description			
Straight Polarizing		Angled Polarizing	
MTSS100- <input type="checkbox"/><input type="checkbox"/>		MTAS100- <input type="checkbox"/><input type="checkbox"/>	